

PROPOSED TRAIL

EXISTING TRAIL

Parkview
Whitley Hospital

Morsches
Park

Columbia
City

30

30

30

30

30

205

205

30

205

30

205

30

30

205

30

30



Countryside Dr

Denzil Dr

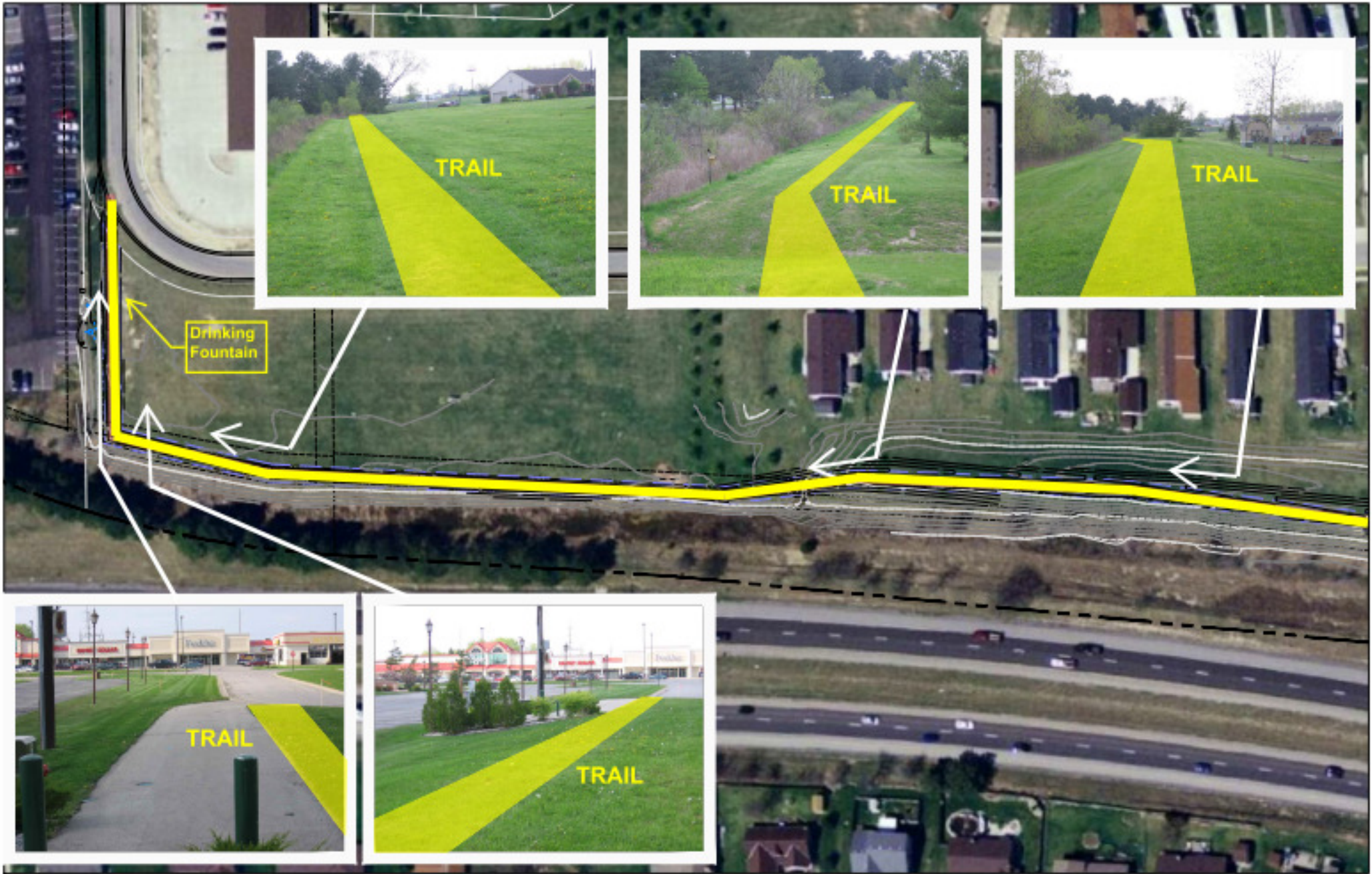
US-30

Blue River Trail

Pedestrian Bridge Crossing

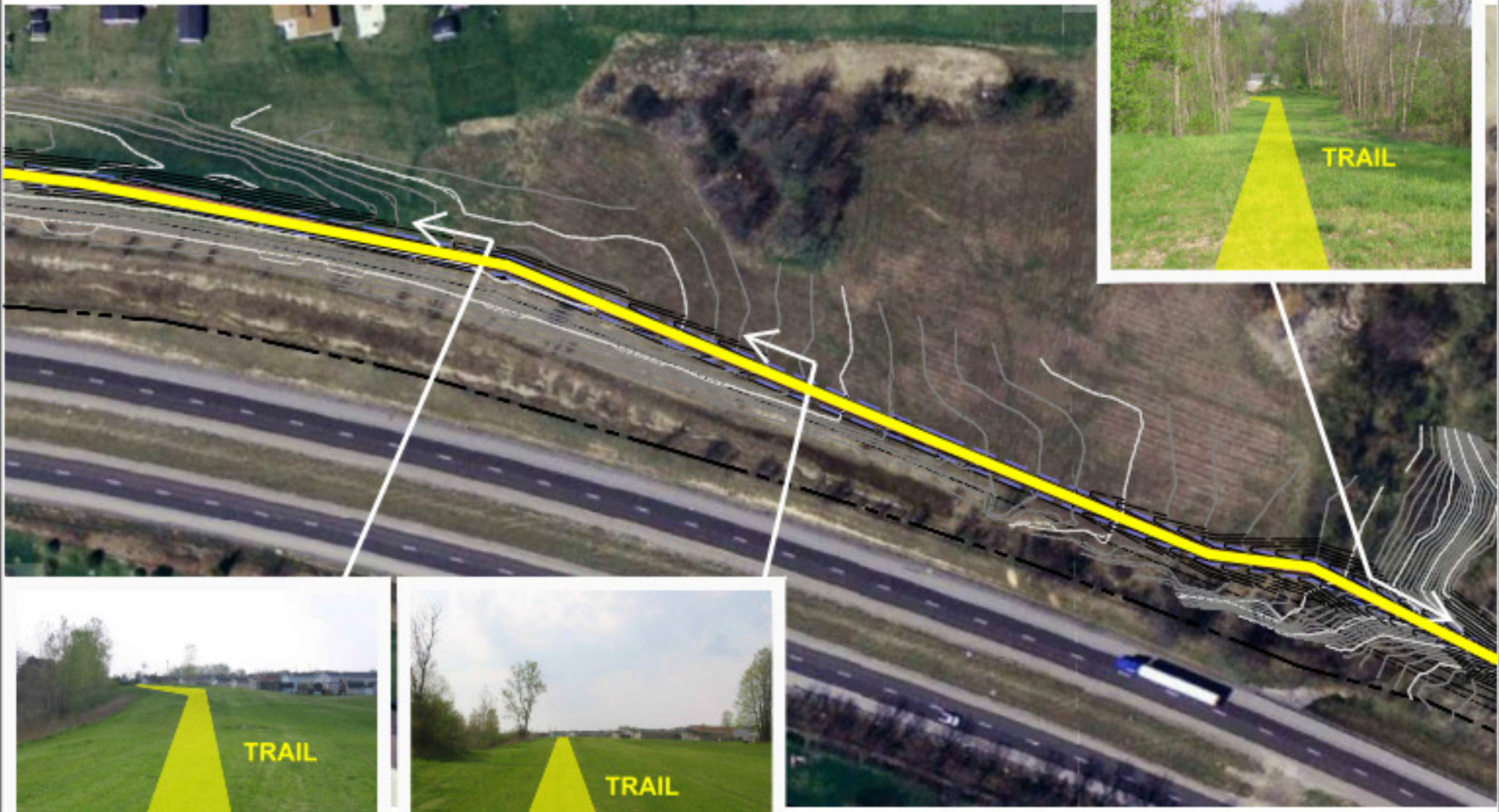
Trailhead Building

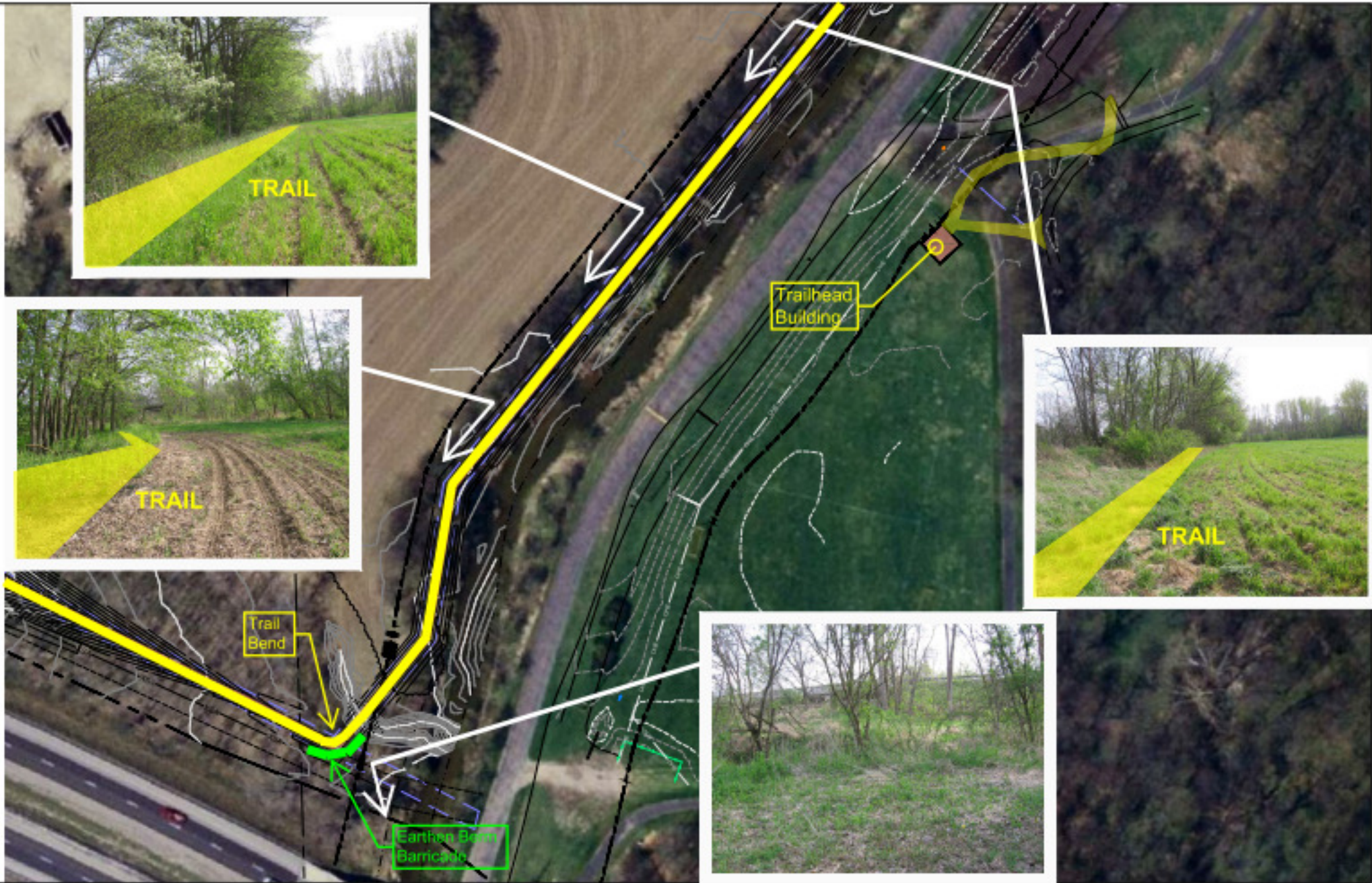
256 FT

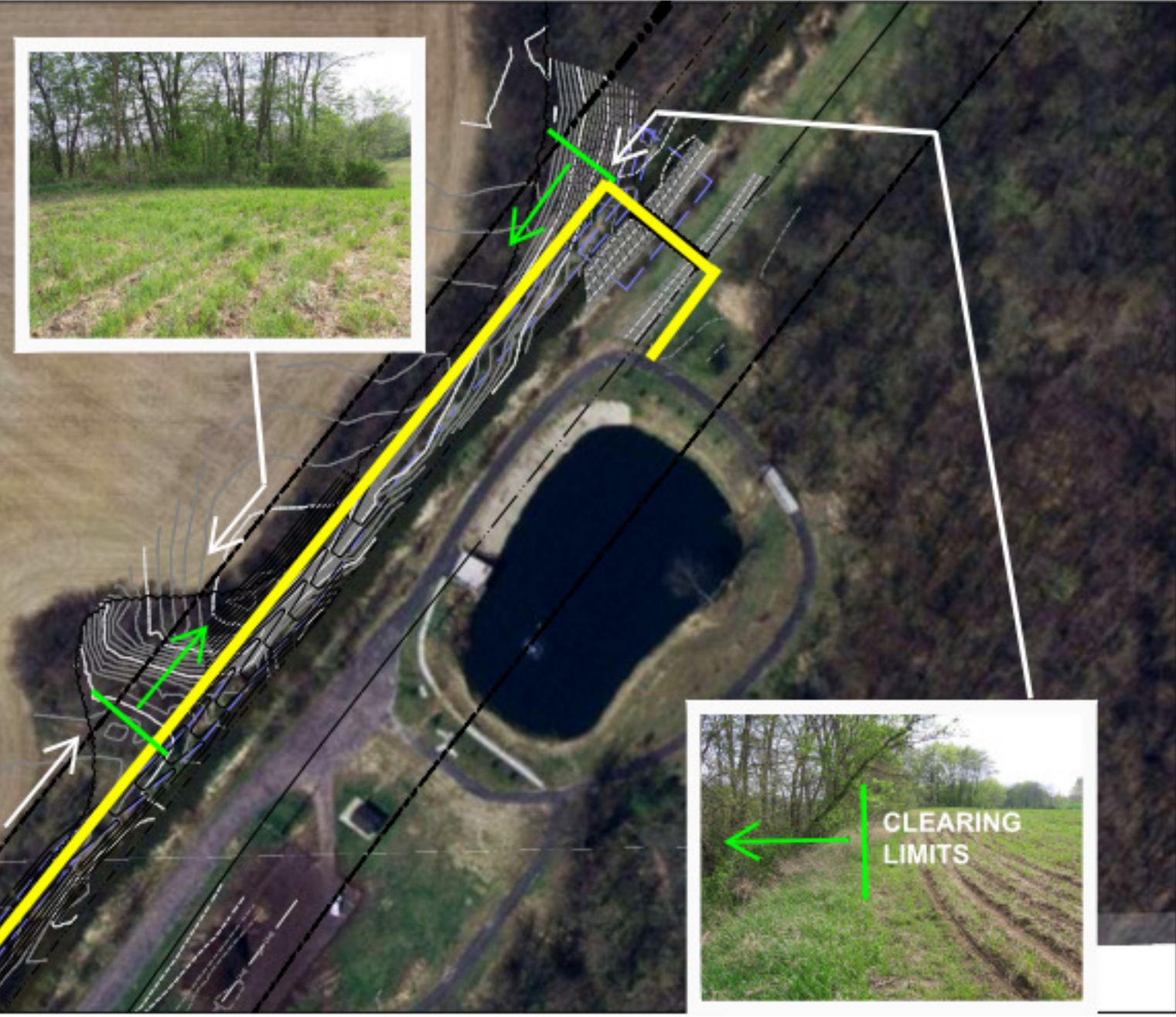
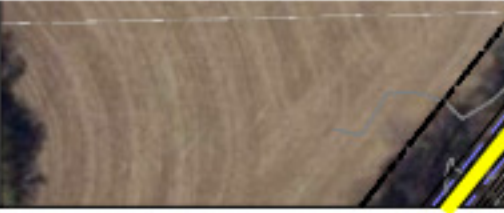


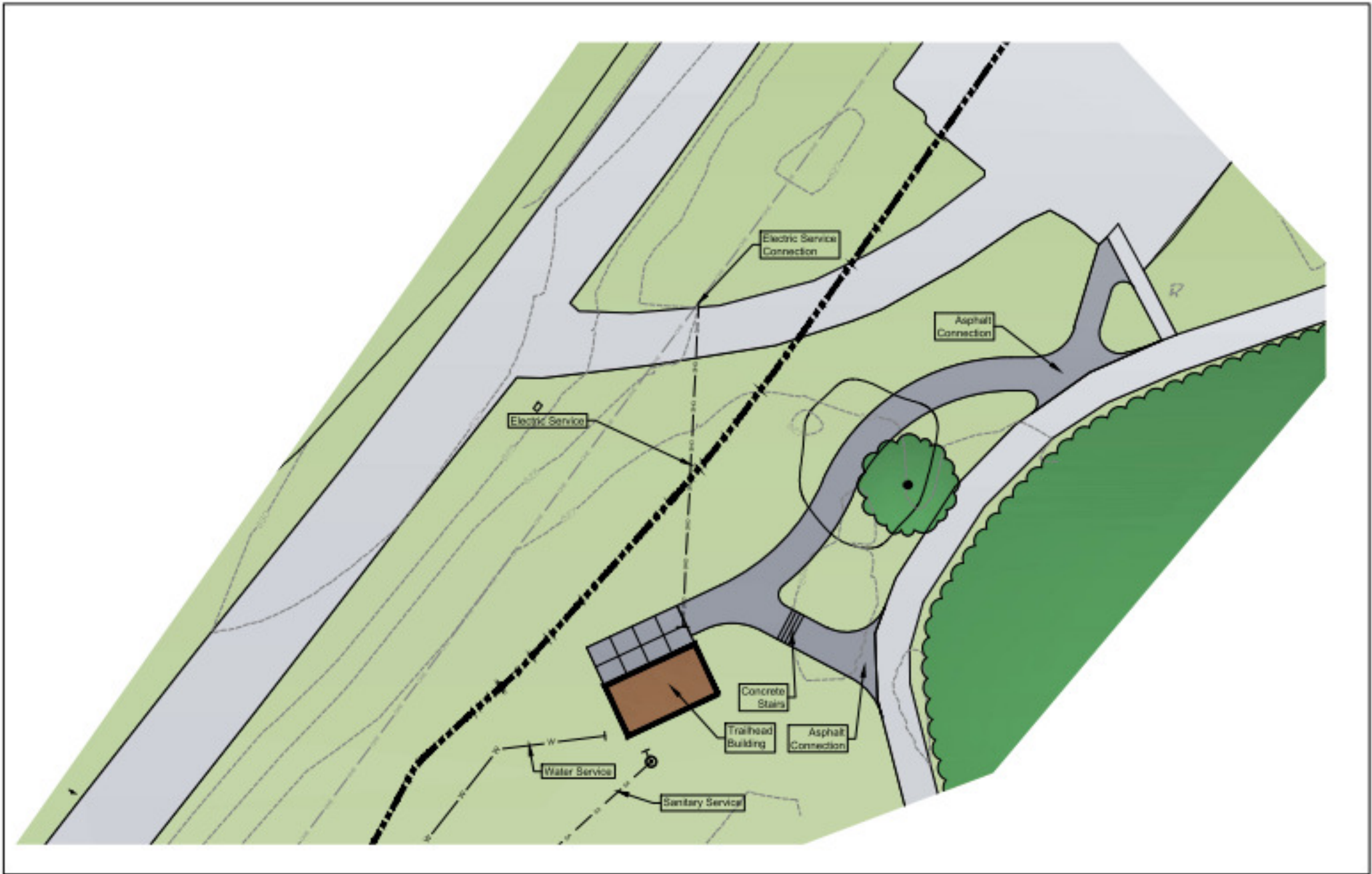
Drinking Fountain



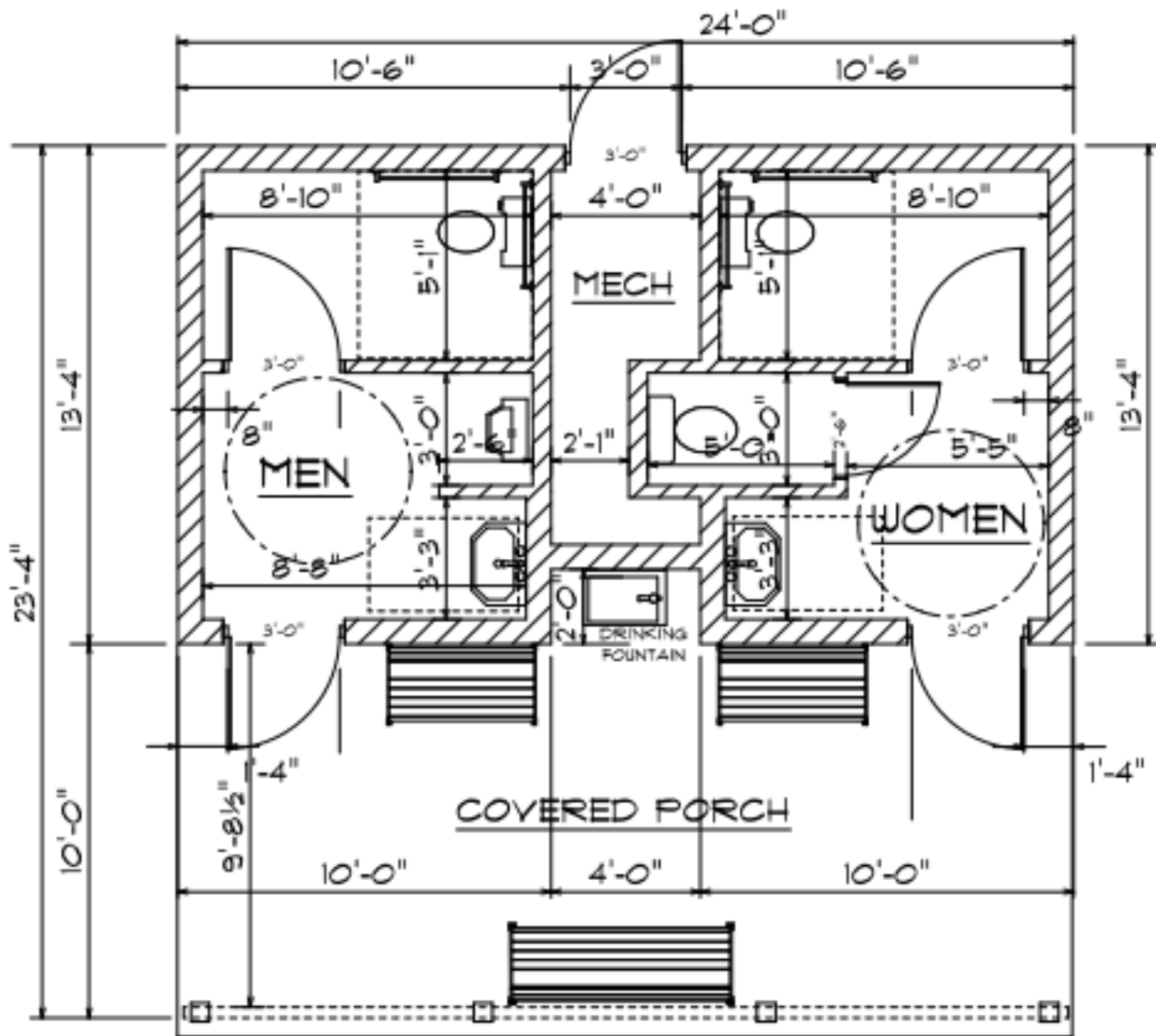












TRAILHEAD FLOOR PLAN

320 SF



TRAIL BUDGET

Trail Base Bid: + \$296,100
Trail Add Alternate (Paved Surface): + \$ 26,000
Trailhead Building: + \$ 60,000
Subtotal: \$382,100

Donations and Services: - \$ 66,400
Columbia City Parks Department - \$ 10,000
DNR Grant: - \$150,000
Dekko Foundation: - \$100,000
Whitley County Community Foundation: - \$ 30,000
Subtotal: - \$356,400

Total Funding Required: \$ 25,700

SCHEDULE

- 90% Presentation to Parks Board and Community: September 26, 2011
- 90% Progress set / Coordination with the DNR, County Engineer, and Post on the Parks Website: September 29, 2011
- 90% Presentation to County Drainage Board: October 17, 2011
- Ground Breaking Ceremony: October 25, 2011
- Final Presentation to Parks Board: October 31, 2011
- Advertise for Bid and Permitting: November 4, 2011
- Pre-Bid Meeting: November 15, 2011
- Bids Received: December 5, 2011
- Special Meeting of the Parks Board: December 5, 2011
- Award Contract: December, 2011
- Start Construction: April, 2012
- Project Completion: July / August, 2012